



**AC 750**

Next Generation Wi-Fi



Dual-Band



Smart Setup,  
No CD Required



Bandwidth Management

**BR-6208AC**

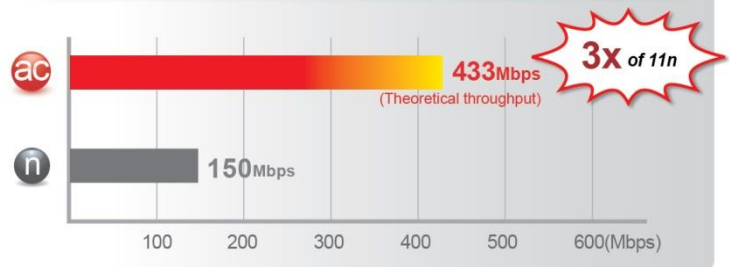
## AC750 Multi-Function Concurrent Dual-Band Wi-Fi Router

The extraordinary growth in the number of wireless devices found in modern homes has seen a huge increase in demand for wireless speed, range and bandwidth. This continuing trend away from wired connections to wireless communication and the ever-increasing throughput demands of new Wi-Fi devices and applications—including Internet TVs, computers, tablets and smartphones—drives the requirements in today’s homes for high-performance, reliable Wi-Fi to unprecedented levels. To meet the connectivity needs of homes and businesses alike, Edimax has launched the BR-6208AC dual-band 802.11ac router: featuring the latest 11ac draft standard for extraordinary improvements in the speed, reliability and quality of wireless communications.

### Next-Generation Wireless Networking

The Edimax BR-6208AC router supports the next generation IEEE 802.11ac wireless standard, meaning higher data rates in the 5GHz band. With 300Mbps speeds in the 2.4GHz band and 433Mbps speeds in 5GHz, the BR-6208AC is ideal for HD video streaming and large file transfers. The router is also backward compatible with 802.11a/b/g/n to ensure compatibility with legacy Wi-Fi devices.

Maximum Speed: Next Generation 802.11ac vs. 802.11n



### Concurrent Dual-Band Wi-Fi Connectivity

The Edimax BR-6208AC router provides simultaneous 2.4GHz (802.11n) and 5GHz (802.11ac) wireless network connectivity for maximum flexibility of use.

**5GHz (Up to 433Mbps)**  
Interference-Free  
HD Video and Gaming

Online Gaming    HD Video Streaming    VoIP Calling

**ac**    **n**    **a**

**Concurrent Dual-Band**

**AC750: 433Mbps(5GHz) + 300Mbps(2.4GHz)**

**2.4GHz (Up to 300Mbps)**  
More Supported Devices  
Basic Internet Applications

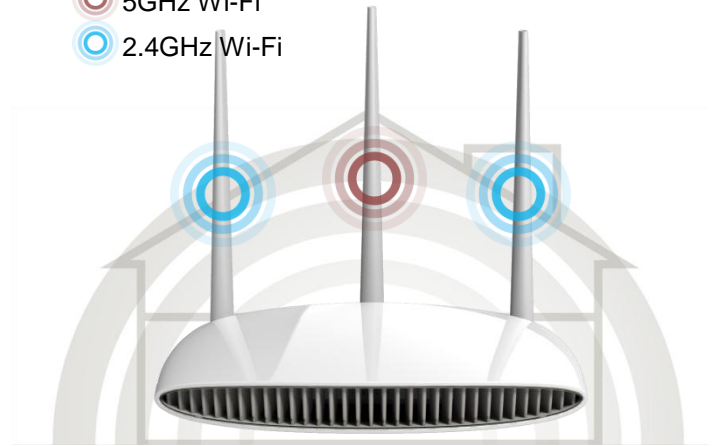
Web Browsing    Online Chat    Email and downloading

**n**    **g**    **b**

# AC750 Multi-Function Concurrent Dual-Band Wi-Fi Router

BR-6208AC

5GHz Wi-Fi  
2.4GHz Wi-Fi



## High Gain Antennas For Better Wi-Fi Performance

Employing three external high-gain fixed antennas, the BR-6208AC provides powerful 2.4GHz and 5GHz dual-band signal strength and enhances Wi-Fi range, providing signal penetration through walls and floors across your home or office.

## 5-in-1 Router, Access Point, Range Extender, Wireless Bridge and WISP

The BR-6208AC can work as router, access point, range extender, wireless bridge or WISP. Just configure the mode you need for your network environment using the smart iQ Setup wizard.

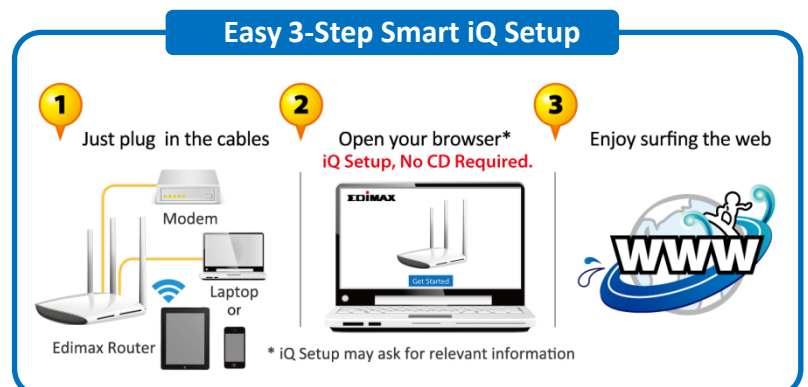


Switch mode using the smart iQ setup wizard on any device with a web browser, no CD required.

*\*Mobile device setup requires iOS 4.0 or Android 4.0 and above.*

## Smart iQ Setup

Features iQ Setup for smart, automatic and quick installation with no CD required.

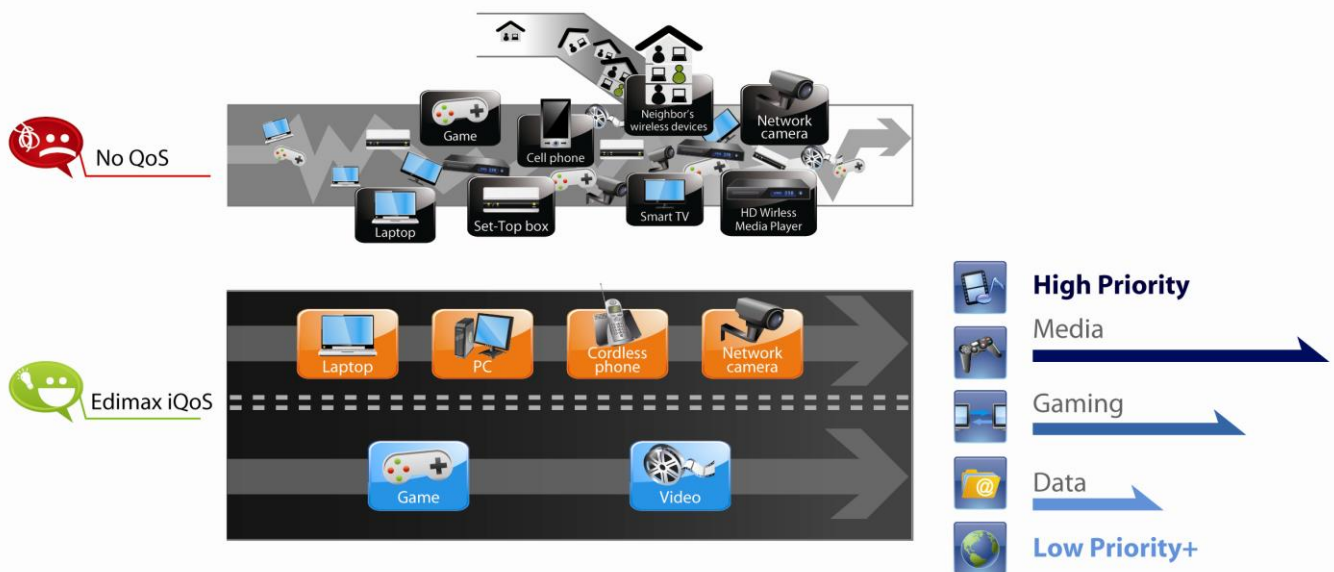


# AC750 Multi-Function Concurrent Dual-Band Wi-Fi Router

BR-6208AC

## Edimax's Revolutionary iQoS

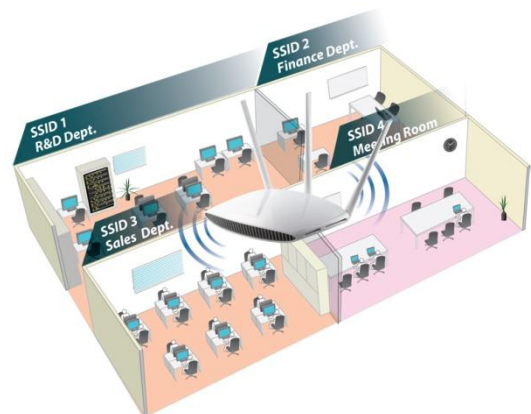
iQoS is Edimax's solution for a quicker, easier, and more effective way to manage Internet bandwidth. While Quality of Service (QoS) functionality is a common feature in routers across the market, typically only advanced users have the knowledge required to set up the complex parameters. Edimax though has redesigned QoS with user-friendliness and accessibility in mind. A simple and intuitive user interface allows users to arrange bandwidth priority settings in just a few clicks. With iQoS, you can enjoy gaming, video streaming, VoIP applications and BT clients at the same time without the usual nightmare of lag and interruptions. An original, efficient and effective means of managing your Internet bandwidth.



## Multi-SSID & VLAN Support\*

Multi-SSID enables users to configure up to eight separate SSIDs (2.4GHz x 4 and 5GHz x 4) in order to group and manage users according to your requirements. In addition, each SSID can be assigned a different VLAN ID, so users with multiple VLANs can manage the network access level of each SSID – ensuring security and protecting confidential or critical network resources.

\*Access point mode only



## Guest Network\*

Supports a guest network to provide connectivity while isolating guests from your primary network.

\*Router mode only



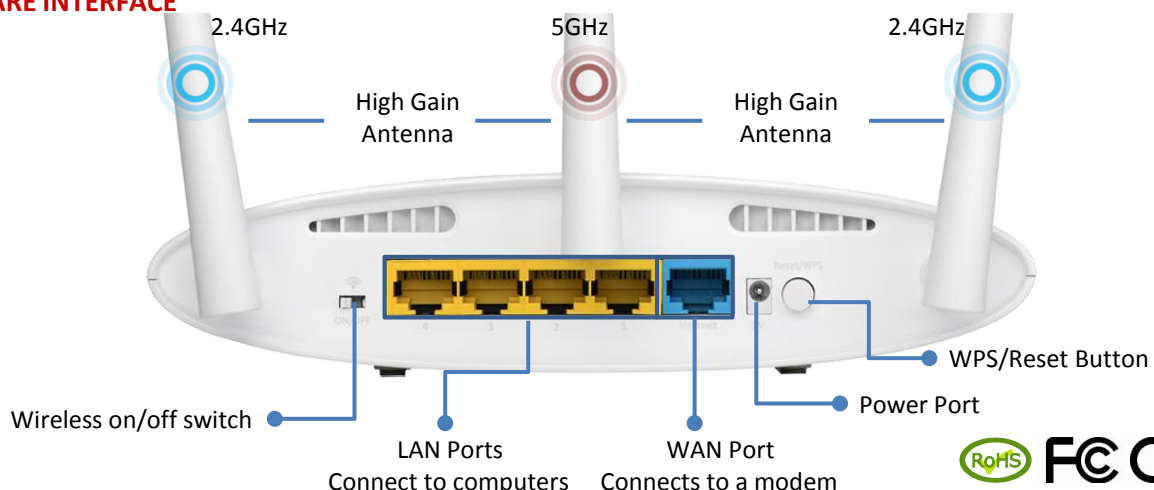
# AC750 Multi-Function Concurrent Dual-Band Wi-Fi Router

**BR-6208AC**

## TECHNICAL SPECIFICATIONS

FUNCTIONS	HARDWARE INTERFACE	MANAGEMENT & INSTALLATION
<ul style="list-style-type: none"> <li>Supports router, access point, range extender, wireless bridge and WISP modes</li> <li>Guest network</li> <li>Up to 8 SSIDs (2.4GHz x 4 and 5GHz x 4) with VLAN support in AP mode</li> <li>IGMP proxy and IGMP snooping</li> <li>DDNS and DHCP</li> <li>Port triggering for special applications</li> <li>Virtual server and DMZ hosting</li> <li>MAC/IP filter and URL blocking</li> <li>iQoS for smart bandwidth management</li> <li>Static routing</li> <li>UPnP architecture</li> <li>VPN pass-through (IPSec/PPTP)</li> <li>Wi-Fi schedule control</li> <li>Fault tolerance firmware upgrade</li> </ul>	<ul style="list-style-type: none"> <li>1 x RJ-45 10/100M WAN port</li> <li>4 x RJ-45 10/100M LAN port</li> <li>LED indicators: Power, Internet, 2.4GHz wireless, 5GHz wireless</li> <li>2 x 2.4GHz antennas and 1 x 5GHz antenna</li> <li>WPS/Reset button</li> <li>Wireless on/off switch</li> </ul>	<ul style="list-style-type: none"> <li>Multi-language user interface</li> <li>Supports remote management</li> <li>System status and security log</li> <li>Firmware upgradable</li> <li>Smart iQ Setup, no CD required</li> <li>Supports smartphone, tablet or laptop setup (iOS 4 or Android 4 and above are required for smartphone or tablet setup).</li> </ul>
WAN	OUTPUT POWER & SENSITIVITY GAIN (5GHz)	OUTPUT POWER & SENSITIVITY GAIN (2.4GHz)
<ul style="list-style-type: none"> <li>Supports WISP connection mode</li> <li>Supports RJ-45 cable/xDSL modems</li> <li>WAN protocol: PPPoE, static IP, dynamic IP, PPTP and L2TP</li> </ul>	<p>Output Power</p> <ul style="list-style-type: none"> <li>11a(54Mbps): 16±1.5dBm</li> <li>11n(20MHz, MCS7): 16±1.5dBm</li> <li>11n(40MHz, MCS7): 16±1.5dBm</li> <li>11ac(80MHz, MCS9): 14±1.5dBm</li> </ul> <p>Receive Sensitivity</p> <ul style="list-style-type: none"> <li>11a(54Mbps): -69±2dBm</li> <li>11n(20MHz, MCS7): -68±2dBm</li> <li>11n(40MHz, MCS7): -64±2dBm</li> <li>11ac(80MHz, MCS9): -57±2dBm</li> </ul>	<p>Output Power</p> <ul style="list-style-type: none"> <li>11b (11Mbps): 18±1.5dBm</li> <li>11g (54Mbps): 17±1.5dBm</li> <li>11n (20MHz, MCS7): 16±1.5dBm</li> <li>11n (40MHz, MCS7): 16±1.5dBm</li> </ul> <p>Receive Sensitivity</p> <ul style="list-style-type: none"> <li>11b(11Mbps): -83±2dBm</li> <li>11g (54Mbps): -69±2dBm</li> <li>11n(20MHz, MCS7): -67±2dBm</li> <li>11n(40MHz, MCS7): -64±2dBm</li> </ul>
SECURITY	MEMORY	HUMIDITY & TEMPERATURE
<ul style="list-style-type: none"> <li>64/128-bit WEP, WPA and WPA2 security</li> <li>QoS for critical operations</li> <li>SPI anti-DoS firewall</li> </ul>	<ul style="list-style-type: none"> <li>4MB NOR Flash</li> <li>64MB RAM</li> </ul>	<ul style="list-style-type: none"> <li>10-90% (non-condensing)</li> <li>0-40°C</li> </ul>
POWER ADAPTER	DIMENSIONS & WEIGHTS	CERTIFICATIONS
<ul style="list-style-type: none"> <li>DC 5V, 1.5A</li> </ul>	<ul style="list-style-type: none"> <li>190.2mm x 141mm x 42mm</li> <li>260g</li> </ul>	<ul style="list-style-type: none"> <li>FCC/CE</li> </ul>

## HARDWARE INTERFACE

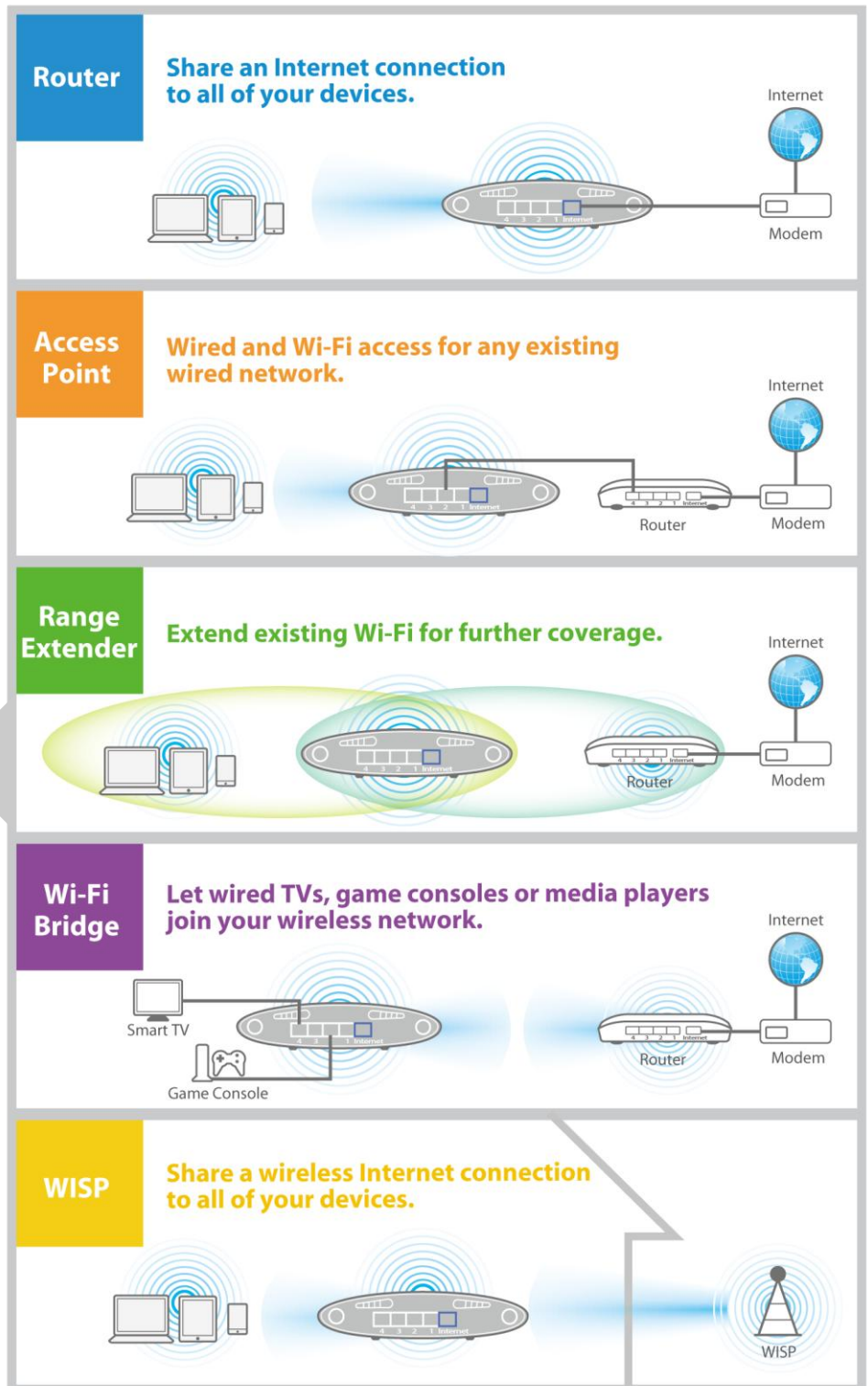




# AC750 Multi-Function Concurrent Dual-Band Wi-Fi Router

BR-6208AC

## APPLICATION DIAGRAM



Maximum performance, actual data rates, and coverage will vary depending on network conditions and environmental factors. Product specifications and design are subject to change without notice.  
Copyright © 2014 Edimax Technology Co. Ltd. All rights reserved.

www.edimax.com