



EPE-4818G



Gigabit PoE Injector

The EnGenius EPE-4818G is designed to supply power and transmit data to PoE capable Access Points through an Ethernet cable from a non-PoE Gigabit Ethernet Switch.

With power output for up to 24 Watts, The EPE-4818G gives network administrators, IT managers, and installers the option to place PoE-client devices on or near ceilings or in crawl-spaces where power outlets may not be available and power Access Points (EAP900H, EAP1750H, ECB1750) while at the same time connecting them to the company's network. The EPE-4818G PoE injector features two Gigabit Ethernet (10/100/1000 Mbps) ports; one port for connecting to an Ethernet Switch and the other for connecting to a PoE-enabled device.

Key Features

- 10/100/1000 Mbps Gigabit In and Out Ports
- Supports PoE Cabling Up to 300 feet
- 48 V Power to Devices over CAT6, Cat5, and Cat5e Cabling
- Power output of up to 24 Watts

The injector uses standard IEEE pin definition to power the device and comes with a 48V/0.375A power supply. Pins 1, 2, and 3, 6 are used for data transmission while pins 4, 5, and 7, 8 are used for sending power to the device via center tap. The EPE-4818G PoE generates power over CAT6, Cat5, and Cat5e cabling of up to 300 feet. By sending out 48 V/0.5A, Ethernet terminals such as Wireless LAN Access Points can be powered remotely from an Ethernet Switch.

Gigabit Speeds

Utilizes Gigabit Ethernet standard speeds of up to 1000 Mbps for faster file transfers and video streaming.

Easy Setup

Just plug in and connect with 802.3at-compliant Access Points.

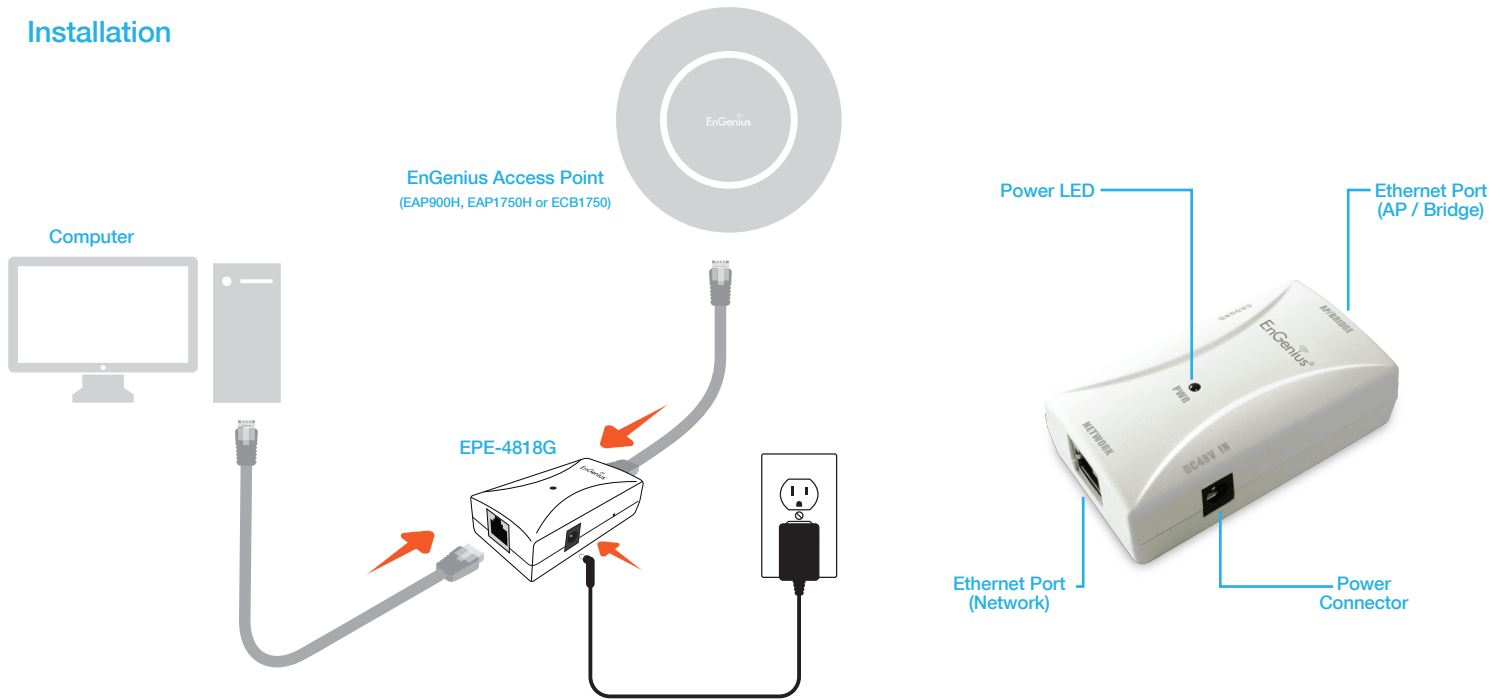
Extend Range and Reach

Allows wireless devices to be mounted on the wall, ceiling, or where external power is not readily accessible with cabling up to 300 feet.

Compatibility

Compatible with EnGenius EAP900H, EAP1750H, and ECB1750 Wireless Indoor Access Points.

Installation



Specifications

Standards

IEEE802.3 10Base-T
 IEEE802.3u 100Base-T
 IEEE802.3ab Gigabit Ethernet

Protocol

CSMA/CD

Ports

Data-in
 PoE Out
 DC Jack

Data Lines

Pair 1: Pin 1 (Rx+) / Pin 2 (Rx-)
 Pair 2: Pin 3 (Tx+) / Pin 6 (Tx-)
 Pair 3: Pin 4 (Vdc) / Pin 5 (Vdc-)
 Pair 4: Pin 7 (Vdc-) / Pin8 (Vdc)

Power Lines

Pair 3: Pin 4 / Pin 5
 Pair 4: Pin 7 / Pin 8

Diagnostic LEDs

Power: Green

Power Consumption

24 Watts

Environmental & Mechanical

Temperature Range

Operating: 32 to 140°F / 0 to 60°C
 Storage: -22 to 176°F / -30 to 80 °C

Humidity (non-condensing)

5% – 95% typical

Power

Input : AC100-240V, 50-60 Hz
 Output : DC 48V / 0.5A (Maximum Output)

Reliability/MTTF

25,000 hours

Weights & Measures

Weight: 0.14 lbs (64 g)
 Width: 1.81" (46 mm)
 Length: 3.23" (82 mm)
 Height: 0.83" (21 mm)

Package Contents

EPE-4818G Gigabit PoE Injector
 Power Adapter
 Quick Installation Guide